



MTB - THE MODULAR TEST BENCH

Flexible. Efficient. Reliable.

Simplify your Testing with our Modular System. 



Modular Test Bench

The Modular Test Bench (MTB) of Areus Engineering GmbH provides a flexible testing environment for telematic vehicle components to analyze the interaction between ECUs and their functionality.



UI unit

Main unit

wiring are located underneath the laboratory bench, while user interface components are easily accessible on the bench. The main unit's modular design allows quick and easy setup changes for new test scenarios. Standardized MTB modules, combined with test setup specific cable harnesses allow testing of different telematics generations.

The optional carrier cart makes the system portable. The cart is designed to fit under standard laboratory benches.

Customize for any Challenge

If our standard configurations don't fulfill your test setup requirements, Areus can provide any customized MTB modules.

Please ask our MTB expert team for more information!

Systems can be tailored individually to virtualize every combination of telematic vehicle components.

MTB Max consists of two units: "main unit" and "user interface unit" (UI unit), providing maximum connectivity capabilities in a space-saving setup. ECUs, measurement devices and



Carrier cart with component tower,

MTB Compact

MTB Compact is a space-saving, cost-effective alternative to MTB Max, covering a broad range of test scenarios. With almost the same dimensions as a MTB Max's UI unit, it provides enough space to accommodate various displays and up to 9 ECUs. MTB Compact is the preferred solution for small to medium sized test setups.



MTB Compact

MTB Mobile - the Portable Solution

MTB Mobile is the perfect solution for testing ECUs at changing locations.

MTB modules are configured in suit-cases to provide a mobile solution. Cable harnesses are compatible with MTB Max, MTB Compact and MTB Mobile.

This offers maximum flexibility to perform extensive testing, using a stationary test bench and transfer the test setup to the MTB Mobile, for example in cars.



MTB Mobile

MTB Remote Power Module

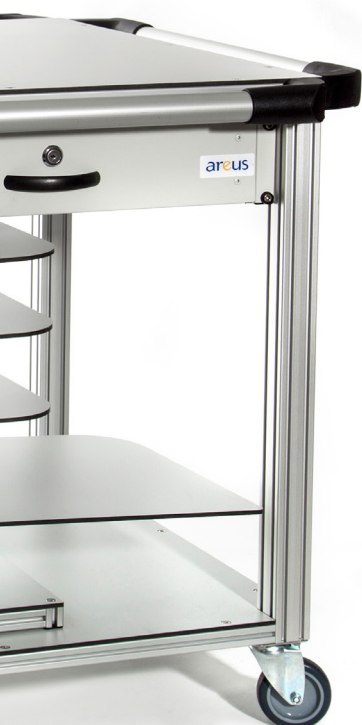
Due to increasing demand for remote testing, Areus has added two important features to the Modular Testbenches:

- Remote switching on and off of the ECU
- Current measurement for monitoring the ECU status

A pluggable module on the testbench connects it or a connected to the PC/Raspberry pi, ... or a PC via USB. Control is via serial protocol (virtualCOM port).



MTB Remote Power Module



UI unit and main unit

Room for ideas

For more information

Areus GmbH
Einsteinstraße 13
71083 Herrenberg

☎ +49 7032 32098-980
📠 +49 7032 32098-829
✉ sales@areus.de

www.areus.de

Questions, requests, suggestions?
We'll be glad to help you!

